

# Internet Access NOW Available in Playa Encanto!

## Detailed Access Steps

Beach Comm LLC

### Detailed steps for Windows XP (Section A) and Windows 98 & 2000 Section B):

#### A. Windows XP

##### Adjusting your Network Setting:

1. Click on the “Start” menu, usually located at the bottom left corner of your screen.
2. Click on the “Control Panel” icon.
3. Double-click the “Network Connections” icon.

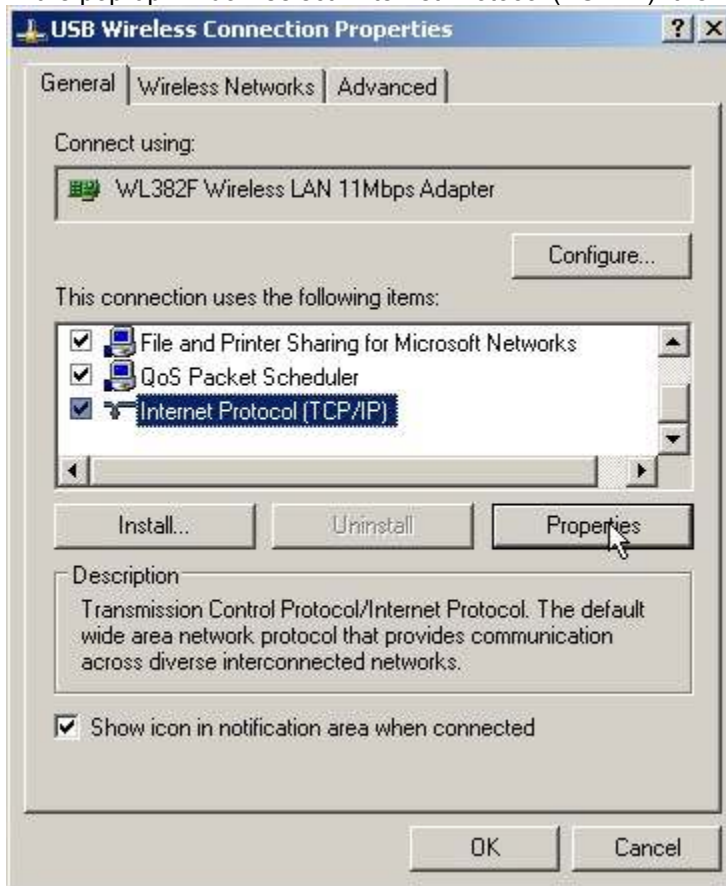
## Control Panel icon



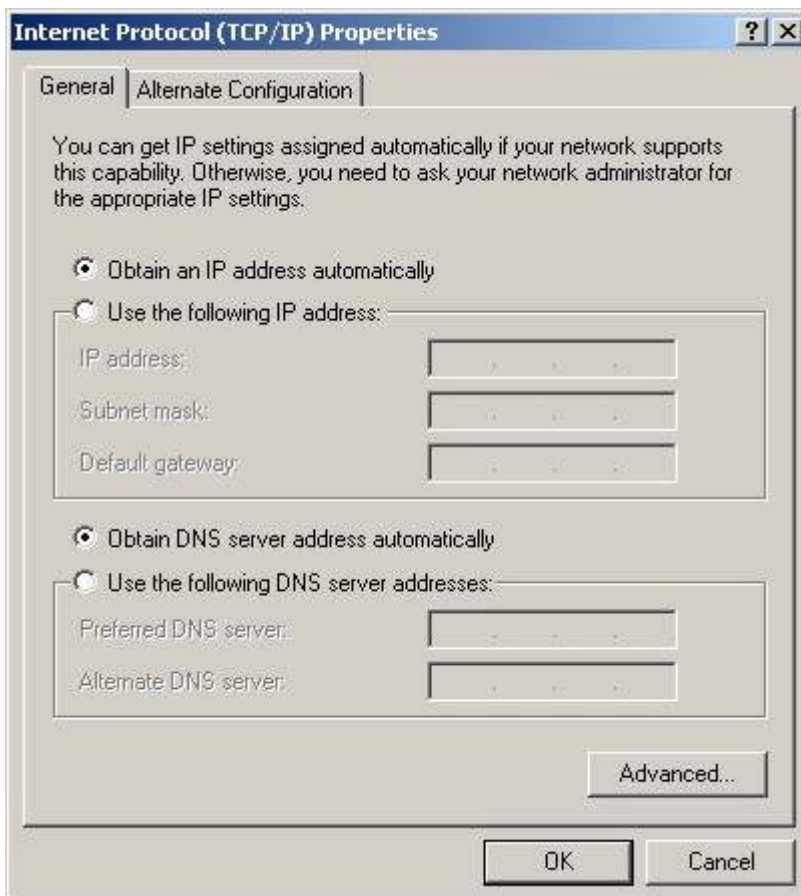
4. Right-click on the icon for your wireless network adapter, usually labeled “Wireless Network Connection” and select “Properties”



5. In the pop-up window select “Internet Protocol (TCP/IP)” then click the properties button.



6. A new pop-up window will appear. Under the “General” tab select “Obtain an IP address automatically.” Also select “Obtain DNS server address automatically.”



7. Click "OK" to accept the changes and close the window.

### Making the Wireless Connection:

[Windows XP built in tools]

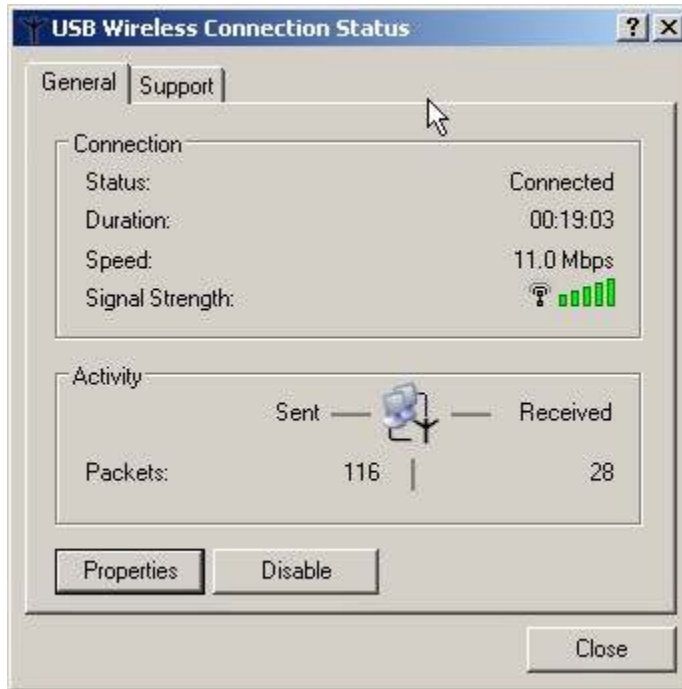
1. Once you are within range of a Nomad ISP Wireless Hotspot, the Windows XP icon for a network connection will pop-up in the System Tray, usually located at the bottom right corner of your screen. Right-click on the Network icon and select "View Available Wireless Networks."



2. In the new pop-up window select "www.nomadisp.com" from the list of "Available wireless networks." Check the box labeled "Allow me to connect to the selected wireless network even though it is not secure" if applicable. Click the "Connect" button to apply settings and close the "Wireless Network Connection" window.



3. You should now be connected to our wireless hotspot.



Open an internet browser and enter a web page address different from your homepage.

*Note: Windows XP will remember the name of the hotspot and automatically make the wireless connection when you revisit this location.*

## **B. Windows 98-2000**

### **Adjusting your Network Setting:**

1. Click on the "Start" menu, usually located at the bottom left corner of your screen.
2. Click on the "Control Panel" icon.
3. Double-click the "Networking" icon.
4. In the pop-up window select "Internet Protocol (TCP/IP)" then click the properties button.
5. A new pop-up window will appear. Under the "General" tab select "Obtain an IP address automatically." Also select "Obtain DNS server address automatically."

### **Making the Wireless Connection:**

1. Open the "Control Panel," click the "Network" icon. Choose "TCP/IP > {Wireless Adapter Name}" & select "Properties."
2. Under the "IP Address" tab select "Obtain an IP address automatically." Click OK to accept the settings, you may be required to restart Windows.
3. Using the software installed with your wireless network adapter locate an area with adequate signal strength and connect to the SSID: "www.nomadisp.com"
4. Set wireless encryption to "Disabled." Open any browser and login.

Still not working? Contact Paul Dove at [pauldove@a2zinstall.com](mailto:pauldove@a2zinstall.com) or 801-680-1485 or see Darryl Poturalski at the beach.